



NOURMALF

# Products Catalog

EXPLORE OUR STYLISH MEDICAL WEAR COLLECTION



NOURMALF

NourmalF is a brand built on the belief that medical professionals deserve the best. We offer premium medical scrubs crafted from TR Spandex, a comfortable, breathable, and durable fabric blend. Our scrubs combine functionality, style, and exceptional comfort, empowering medical professionals in the Gulf Area to perform at their best. By adhering to this brand book and consistently delivering quality products and exceptional service, we aim to become the leading choice for medical scrubs in the Gulf Area and beyond.





# CONTENT

---

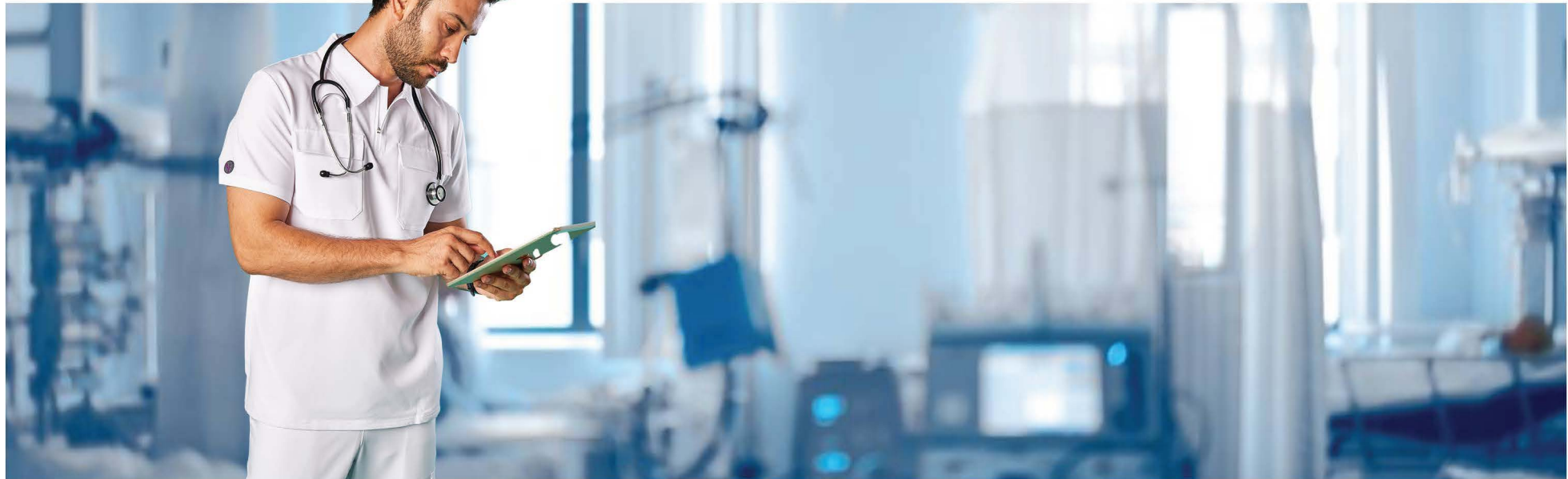
INTRO	<b>01 04</b>	QUALITY ASSURANCE
SUMMARY	<b>02 05</b>	BRAND VALUES
MISSION & VISION	<b>03 06</b>	OUR PRODUCTS

# COMPANY SUMMARY

NourmalF is a leading B2B supplier of premium medical scrubs designed specifically for doctors, clinics, hospitals, and medical centers in the Gulf Area. We offer a range of high-quality, functional, and stylish scrubs crafted from TR Spandex, a comfortable and durable fabric blend of 72% polyester, 21% rayon, and 7% spandex. Our scrubs provide exceptional breathability, freedom of movement, and long-lasting wear, ensuring comfort and confidence throughout the workday.



CONFIDENCE  
INNOVATION  
PROFESSIONALISM  
COMFORT



## MISSION

---

To empower medical professionals in the Gulf Area with innovative and high-performance medical scrubs that combine exceptional comfort, functionality, and style.

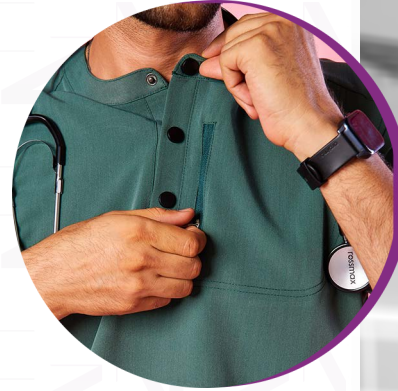
## VISION

To become the leading provider of medical scrubs in the Gulf Area, fostering a sense of professionalism, well-being, and a positive working environment for healthcare providers.

## NourmalF's Commitment to Quality

NourmalF prioritizes the highest quality standards to ensure its products align with its vision of supporting the medical field with exceptional attire. By focusing on every detail, from materials to manufacturing processes, NourmalF guarantees that its scrubs meet rigorous quality requirements. The use of TR Spandex—a premium blend of 72% polyester, 21% rayon, and 7% spandex—ensures durability, comfort, and functionality, tailored specifically for the demanding needs of healthcare professionals.

To maintain these standards, NourmalF partners with two carefully selected factories: one located in the Fifth Settlement, Egypt, and another in Shenzhen, China. These facilities were chosen for their proven track records in producing high-quality textiles and their ability to meet NourmalF's exacting specifications. This strategic collaboration allows NourmalF to consistently deliver products that reflect the brand's commitment to excellence and support healthcare professionals across the Gulf Area.



# BRAND VALUES

01

**Innovation:** We research and develop cutting-edge fabrics and technologies for superior comfort, functionality, and durability in our TR Spandex scrubs.

02

**Quality:** Our commitment is to provide doctors, clinics, hospitals, and medical centers with reliable scrubs that meet the demanding needs of the medical environment.

03

**Style:** We believe medical professionals deserve a professional and stylish appearance. We offer a range of modern and flattering designs.

04

**Comfort:** Our TR Spandex fabric blend prioritizes comfort and well-being, allowing medical professionals to perform their duties with ease throughout long shifts.

“

WE OFFER PREMIUM

MEDICAL SCRUBS CRAFTED FROM TR SPANDEX

## OUR CLIENTS

عيادات  
د. عيسى الخثيمي  
الطبية  
أول عيادات تخصصية في أمراض النساء والولادة بالخرج





[www.nourmal-f.com](http://www.nourmal-f.com)

# Luxury Doctors; **Grace Care Set**

 **Muted Beige**





[www.nourmal-f.com](http://www.nourmal-f.com)

# Luxury Doctors; **Grace Care Set**

**Bamboo Green**



[www.nourmal-f.com](http://www.nourmal-f.com)

# Luxury Doctors; **Grace Care Set**

 **Mushroom Beige**



[www.nourmal-f.com](http://www.nourmal-f.com)

# Luxury Doctors; **Grace Care Set**

**Violet Gems**



[www.nourmal-f.com](http://www.nourmal-f.com)

# Luxury Doctors; **Grace Care Set**

■  
**Charcoal Black**



[www.nourmal-f.com](http://www.nourmal-f.com)

# High Quality Doctors; **Femme Flex Set**

 Powder Blue

---



[www.nourmal-f.com](http://www.nourmal-f.com)

# High Quality Doctors; **Femme Flex Set**

 **Carmine Red**

---



# High Quality Doctors; **Femme Flex Set**

 **Citrus Lime**

---



[www.nourmal-f.com](http://www.nourmal-f.com)

# High Quality Doctors; **Femme Flex Set**

 **Fuschia Fusion**





[www.nourmal-f.com](http://www.nourmal-f.com)

# High Quality Doctors; **Simplicity Med Set**

■  
**Midnight Navy**



[www.nourmal-f.com](http://www.nourmal-f.com)

# High Quality Doctors; **Simplicity Med Set**

 **Majestic Blue**

---



[www.nourmal-f.com](http://www.nourmal-f.com)

# Nurses; **Femme Function Set**

 **Magnetic Cyan**



[www.nourmal-f.com](http://www.nourmal-f.com)

# Nurses; **Femme Function Set**

**Space Blue**



[www.nourmal-f.com](http://www.nourmal-f.com)

# Nurses; **Femme Function Set**

 **Lush Lavender**



[www.nourmal-f.com](http://www.nourmal-f.com)

# Nurses; **Femme Function Set**

 **Sapphire Blue**



# Lab Coats



[www.nourmal-f.com](http://www.nourmal-f.com)

# Hijabi Set



Marine Blue



Jungle Green





[www.nourmal-f.com](http://www.nourmal-f.com)

# Luxury Doctors; **Prime Care Set**

 **Admiral Blue**

---



[www.nourmal-f.com](http://www.nourmal-f.com)

# Luxury Doctors; **Prime Care Set**

 **Coral Blue**



[www.nourmal-f.com](http://www.nourmal-f.com)

# Luxury Doctors; **Prime Care Set**

■  
**Deep Black**  
\_\_\_\_\_



[www.nourmal-f.com](http://www.nourmal-f.com)

High Quality Doctors; **Simple  
Comfort Set**

 **Vintage Red**



[www.nourmal-f.com](http://www.nourmal-f.com)

# High Quality Doctors; **Simple Comfort Set**

■  
**Midnight Blue**  
\_\_\_\_\_



[www.nourmal-f.com](http://www.nourmal-f.com)

# High Quality Doctors; **Simple Comfort Set**

 **Sandy Glow**

---



[www.nourmal-f.com](http://www.nourmal-f.com)

# High Quality Doctors; **Simple Comfort Set**

 **Pistachio Dream**

---



[www.nourmal-f.com](http://www.nourmal-f.com)

High Quality Doctors; **Smart Features Set**

 **Cerulean Blue**





[www.nourmal-f.com](http://www.nourmal-f.com)

High Quality Doctors; **Smart  
Features Set**

**Moss Green**



[www.nourmal-f.com](http://www.nourmal-f.com)

High Quality Doctors; **Smart Features Set**

■  
**Onyx Grey**

---



[www.nourmal-f.com](http://www.nourmal-f.com)

# High Quality Doctors; **Smart Features Set**

 **Oxford Blue**  

---



[www.nourmal-f.com](http://www.nourmal-f.com)

# Male Nurses

White

---

# Comprehensive Hospital Solutions

NourmalF goes beyond premium medical scrubs by offering a diverse range of high-quality products tailored to hospitals and medical facilities. These include bedding, bed runners, pillows, disposable or reusable clothing, and specialized furniture accessories. Each product is designed to meet the unique needs of healthcare environments, ensuring durability, comfort, and hygiene. With a commitment to excellence, NourmalF provides comprehensive solutions that support both medical professionals and patient care.



• **Products name**

- 1- Disposable non- woven Bed Sheet.
- 2- Disposable paper bed sheet roll.
- 3- Disposable Cap.
- 4- Disposable Gown.
- 5- Maxi roll 300 M.
- 6-Facial Tissue S200\*5\*10

• **Classification**

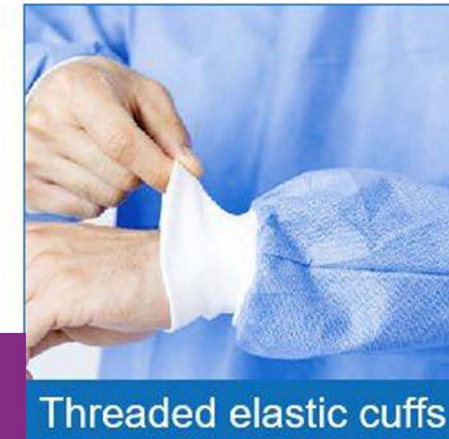
For medical products: Class A according to Saudi Food and Drug Authority regulation MDS-REQ-001.

• **Intended Use**

Use to provide a clean and hygienic surface in medical, general industry, food processing and home care ..etc. •

**Characteristics**

Disposable non- woven Bed Sheet	Description	Disposable non- woven Bed Sheet are made from PP non-woven fabric used as a barrier between the patient and the bed preventing the transfer of germs and provides a soft and cushioned surface for patient comfort during examinations or treatments.
Disposable paper bed sheet roll.	Description	Disposable Paper Bed Sheet Roll are made from paper (Hygienic cellulose product) used as a barrier between the patient and the bed preventing the transfer of germs and provides a soft and cushioned surface for patient comfort during examinations or treatments.





Hot melt process



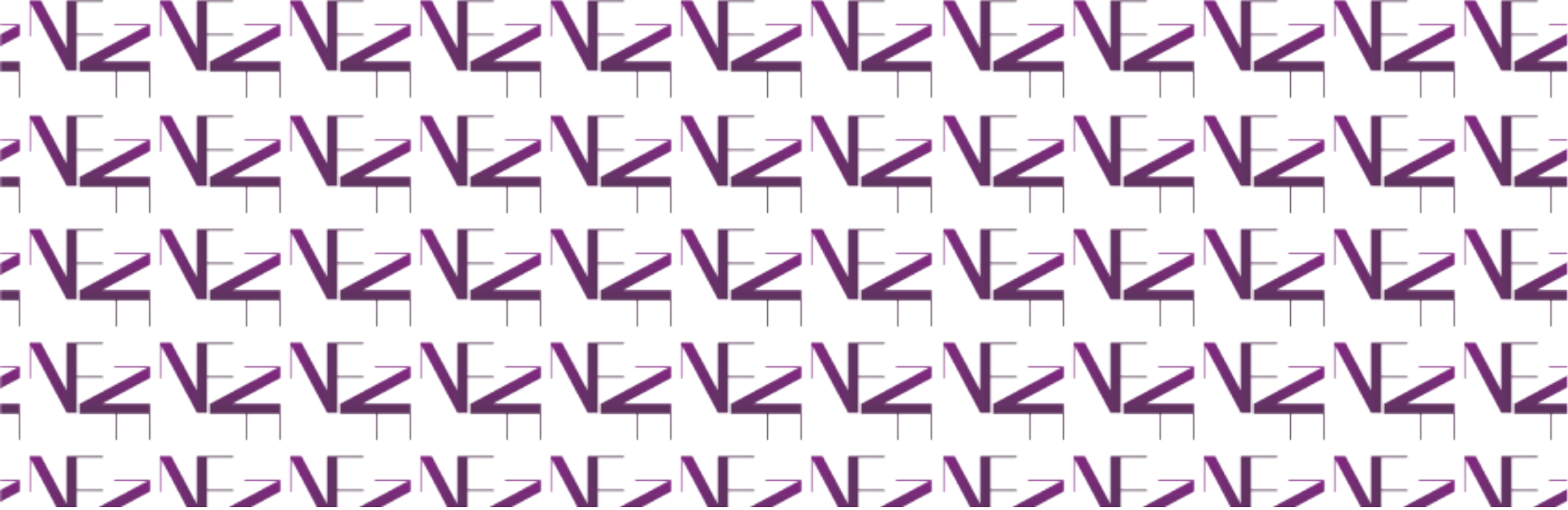
Velcro Closure



Half reinforcement

Product name	Code	Material	GSM	Color	Packing	Dimension (L*W)	Dimension Tolerance	LCL Weight/ piece(gram)	Target Weight/ piece(gram)	UCL Weight/ piece(gram)
Disposable non- woven Bed Sheet	FG00009	SS Polypropylene non-woven fabric	17-gsm	White	1pcs/bag, 12pcs/ctn or as request	2200 *50 cm or as request	L±200cm W±5cm	237.5	250	262.5
Disposable paper bed sheet roll.	FG00013	hygienic tissue paper (Hygienic cellulose product)	28-gsm	White	1pcs/bag, 12pcs/ctn or as request	2200 *50 cm or as request	L±200cm W±5cm	313.5	330	346.5
Disposable Cap.	FG0006	/SS Polypropylene non-woven fabric	12-gsm	Blue /White/ as request	100 pcs/bag 1000 pcs/ctn or as request	45*44 cm, or as request	± 2cm	2.66	2.8	2.94
Disposable Gown/ size /small	FG0004	SS Polypropylene non-woven fabric	25-gsm	Blue /yellow/ as request	10 pcs/bag 100pcs/ctn or as request	110 * 50cm or as request	L= ±5 cm W= ±5 cm	41.8	44	46.2
Disposable Gown/ size /medium	FG0004	SS Polypropylene non-woven fabric	25-gsm	Blue /yellow/ as request	10 pcs/bag 100pcs/ctn or as request	110 * 60 cm or as request	L= ±5 cm W= ±5 cm	45.6	48	50.4





# Thank You!



[www.lotus-const.com](http://www.lotus-const.com)

[www.nourmal-f.com](http://www.nourmal-f.com)